



Elevation with Optional Stone and Upgraded Porch Pickets

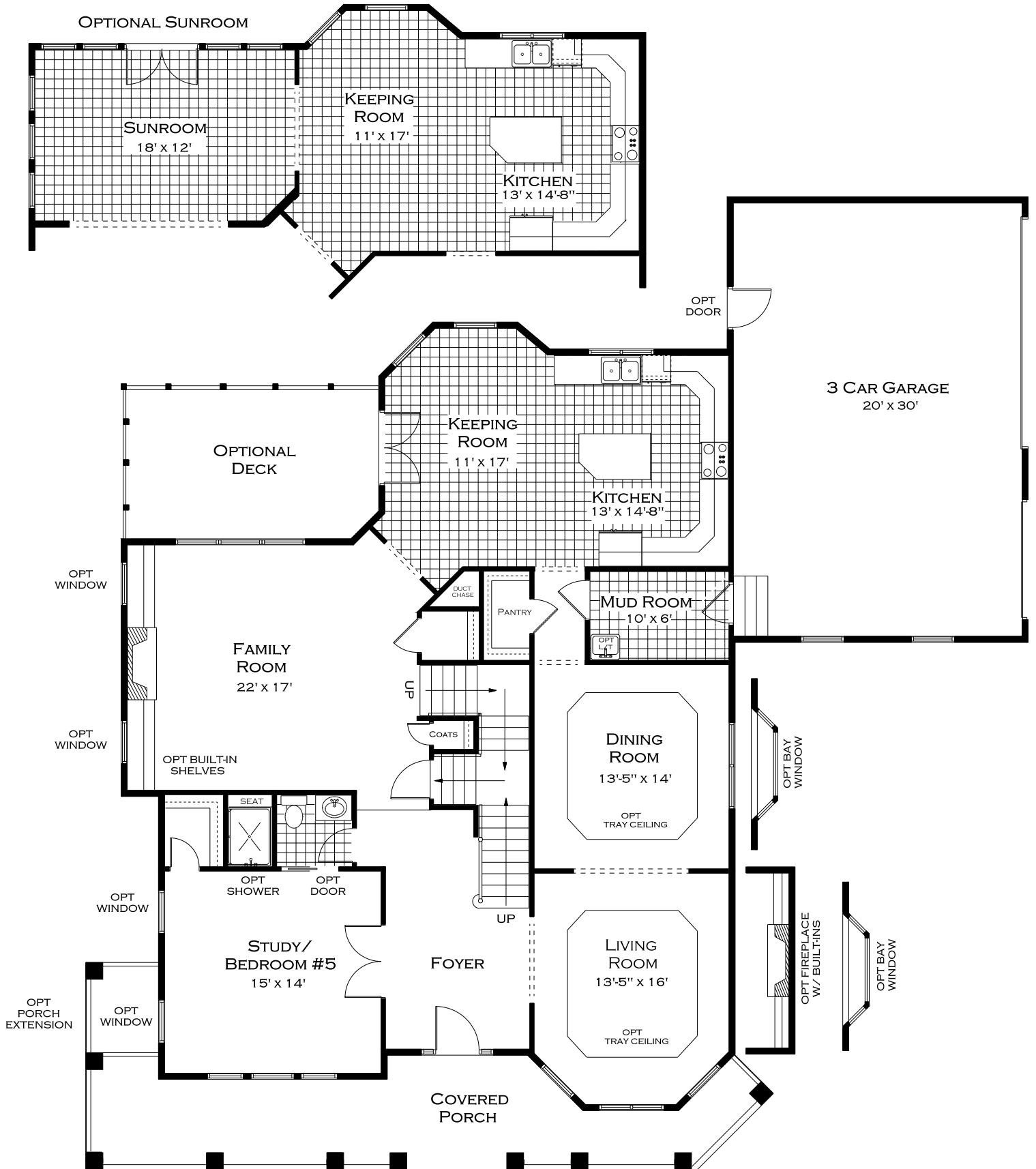
The Victoria

Main Floor	1,880 sq. ft.
Second Floor	2,000 sq. ft.
Third Floor	400 sq. ft.
Total Living	4,280 sq. ft.

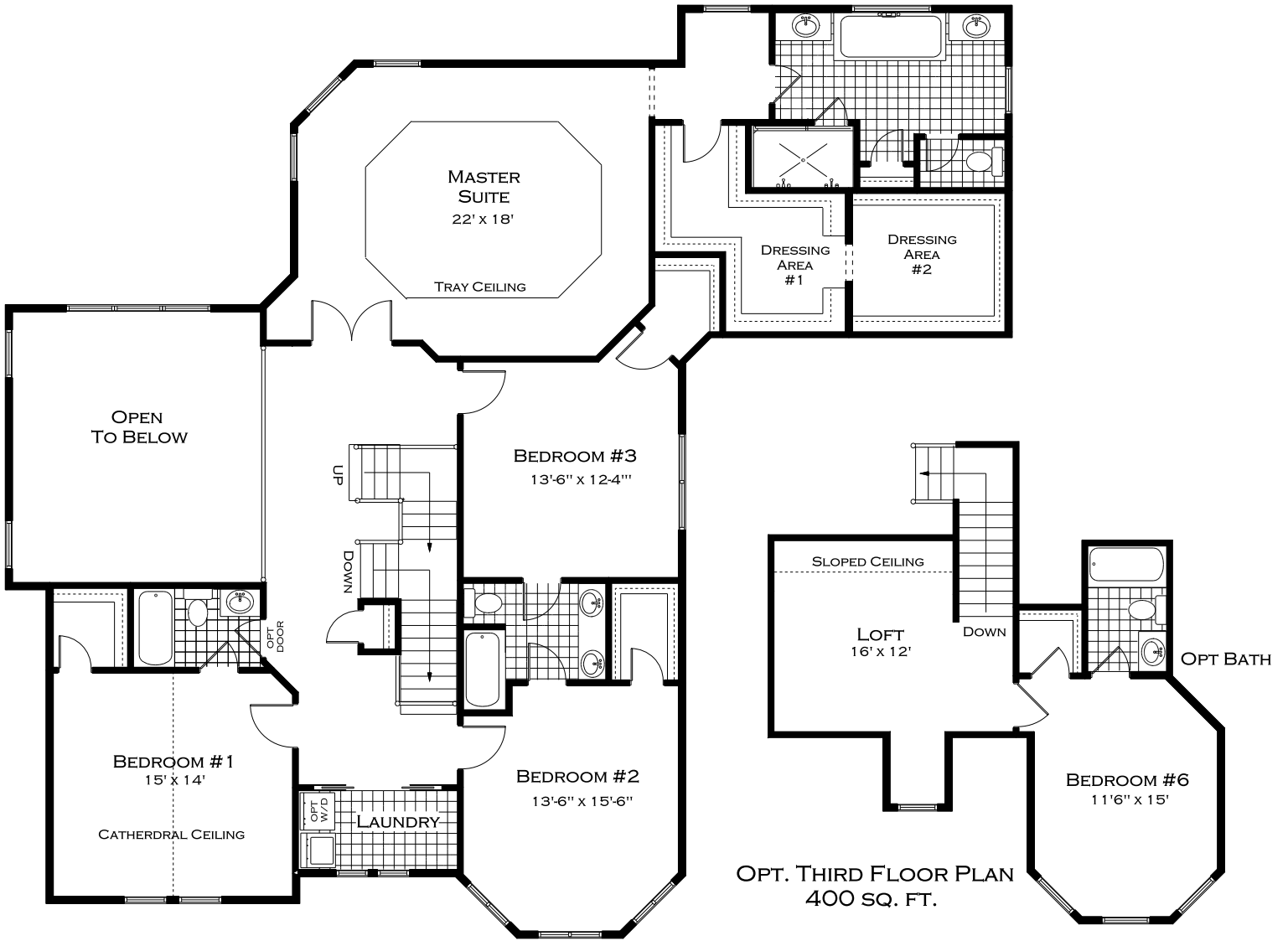
A Classic American Home!

The traditional details makes this a home for many generations. Enjoy the large front porch on a summer's day. The well-organized family kitchen is complete with the windows that fill the keeping room. A unique dual staircase allows for easy access from the two-story family room or to the front foyer. Upstairs the bedrooms are spacious with plenty of windows and generous closets. The third floor loft is a wonderful all around living space.





**THE VICTORIA
 MAIN FLOOR PLAN
 1,880 SQ. FT.**



THE VICTORIA
 SECOND FLOOR PLAN
 2,000 SQ. FT.

OPT. THIRD FLOOR PLAN
 400 SQ. FT.

MODIFY

Go ahead and modify any Floor Plan to meet your needs. Design your own kitchen. Change the layout. Add an in-law suite. Add a bath. Change the elevation. You are free to change the plans to meet your needs.

Most Requested Modifications

Add a 1st Floor Bedroom

Change Walls

Add a Floor Over a Two-Story Area

New Front Elevation

Add Front or Back Porch, screened porch, sunroom or deck

Change exterior building materials

Increase Square Footage

Add a Sunroom



You are free to create a home inspired by what you love. And designed for how you live. Explore all your possibilities. How it looks, feels, and works. We give you all the choices – you decide

703-729-0858
WWW.PARAGONHOMES.ORG