



Elevation with Optional Dormer on Upper Roof

The Hyannis Port

Main Floor	2,200 sq. ft
Second Floor	2,320 sq. ft.
Total Living	4,520 sq. ft.

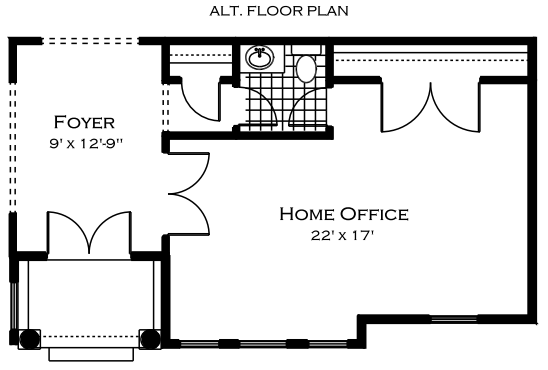
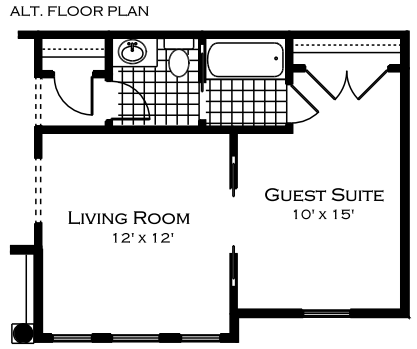
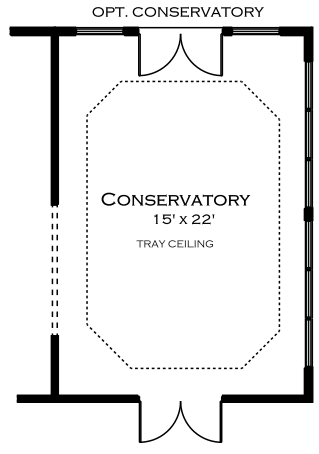
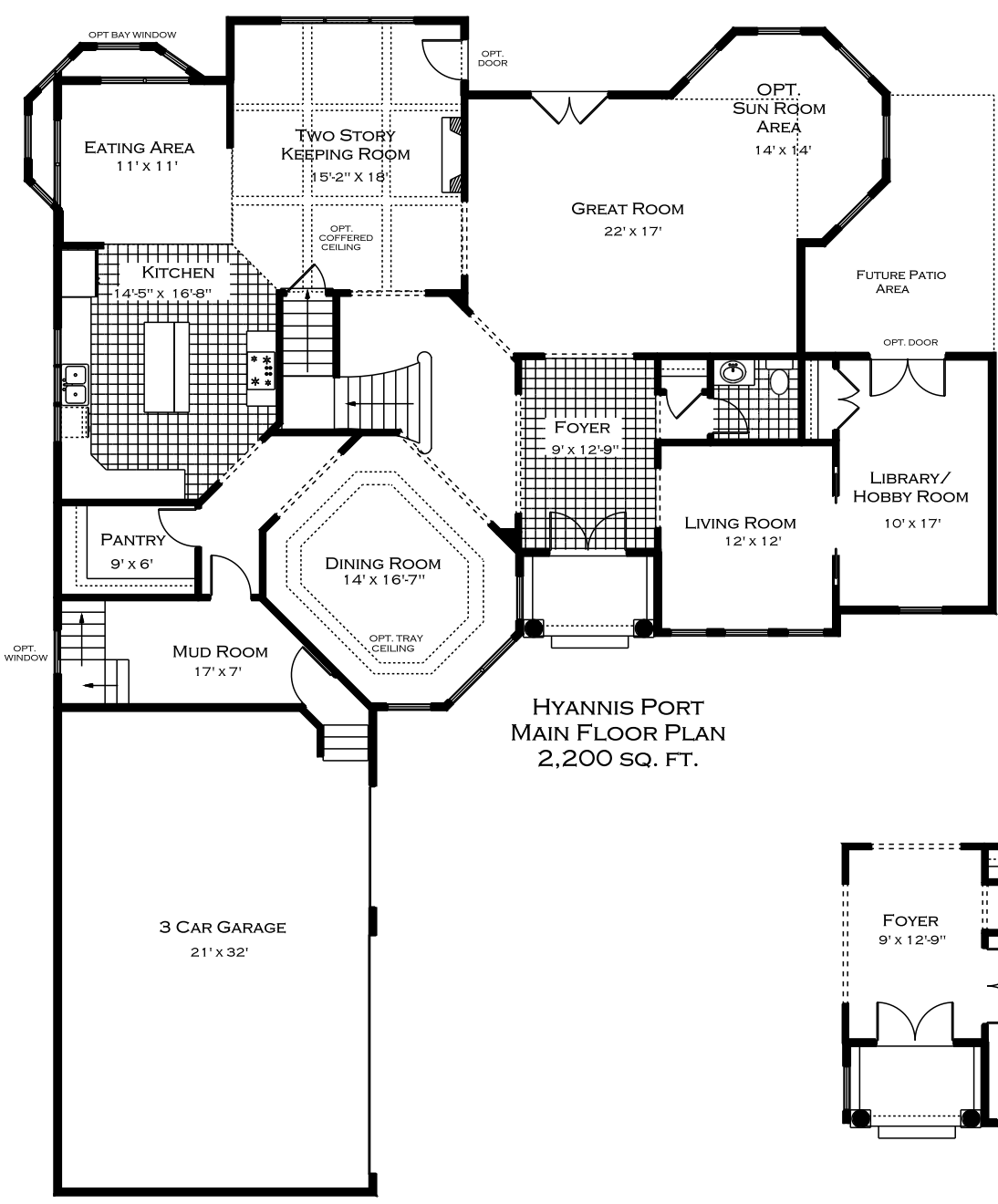
A Classic Southampton Stone and Shingle Home.!

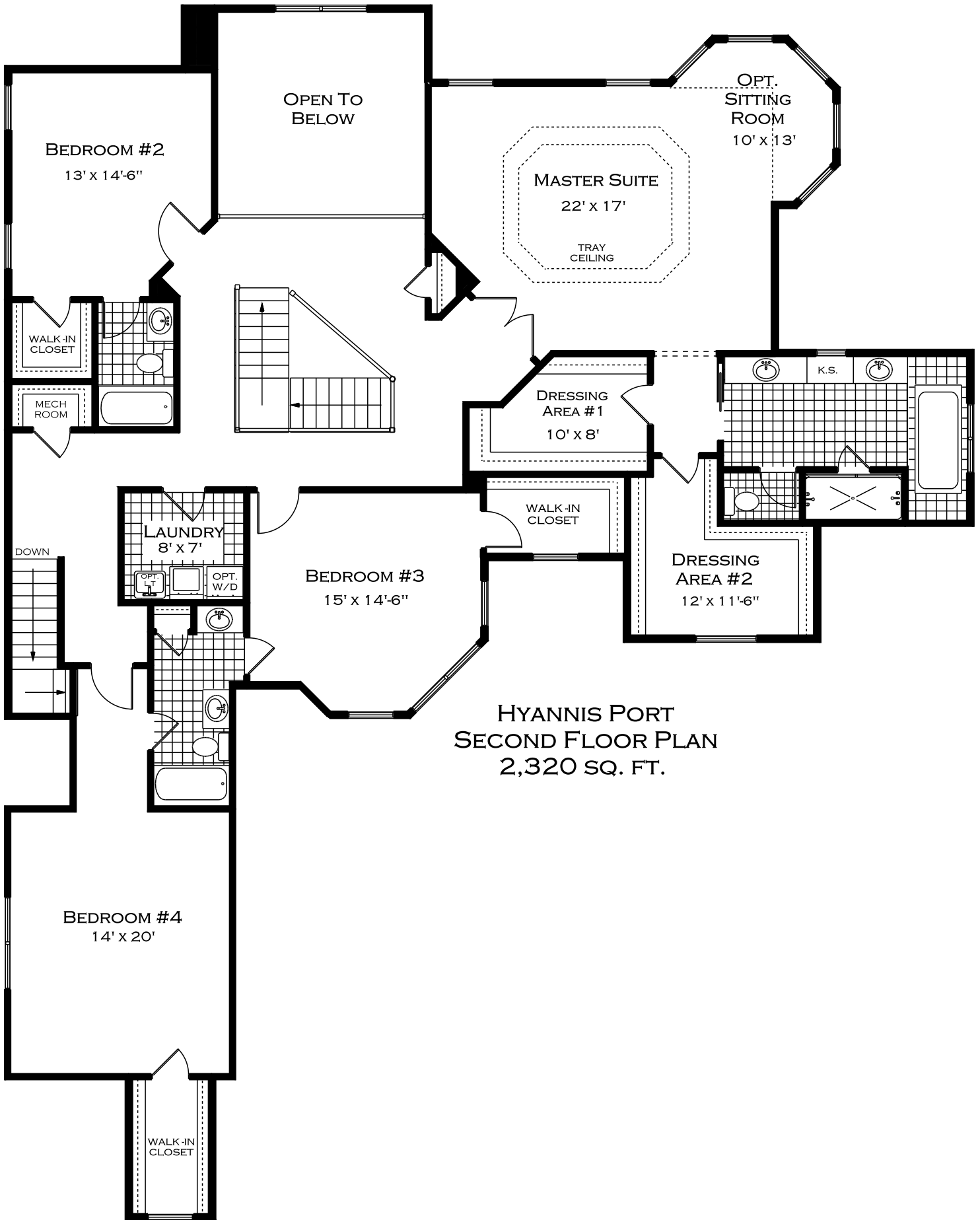
This home is rooted in strong style from the front door with its heavy trim and columns to the octagon shapes in both the upper and lower floors. Each room is unique and has purpose.

The two-story keeping room for family fun living, the great room for entertaining and relaxing to the circular upper hallway - all thoughtfully designed.

This is a truly beautiful home.







HYANNIS PORT
 SECOND FLOOR PLAN
 2,320 SQ. FT.

MODIFY

Go ahead and modify any Floor Plan to meet your needs. Design your own kitchen. Change the layout. Add an in-law suite. Add a bath. Change the elevation. You are free to change the plans to meet your needs.

Most Requested Modifications

Add a 1st Floor Bedroom

Change Walls

Add a Floor Over a Two-Story Area

New Front Elevation

Add Front or Back Porch, screened porch, sunroom or deck

Change exterior building materials

Increase Square Footage

Add a Sunroom



You are free to create a home inspired by what you love. And designed for how you live. Explore all your possibilities. How it looks, feels, and works. We give you all the choices – you decide

703-729-0858
WWW.PARAGONHOMES.ORG